

# Collaborative Integration: How Can Civil Society, Municipalities and Governments Work Together to Better Support the Reception and Integration of Resettled Refugees?

24 November 2023 | Berlin



# About MPI Europe

MPI Europe seeks to improve immigration and integration policies through authoritative research and analysis, opportunities for learning and dialogue, and the development of new ideas to address complex policy questions.

For more info, please visit: [www.migrationpolicy.org/](http://www.migrationpolicy.org/).

info@migrationpolicy.org



@MPI\_Europe



@MigrationPolicyInstitute



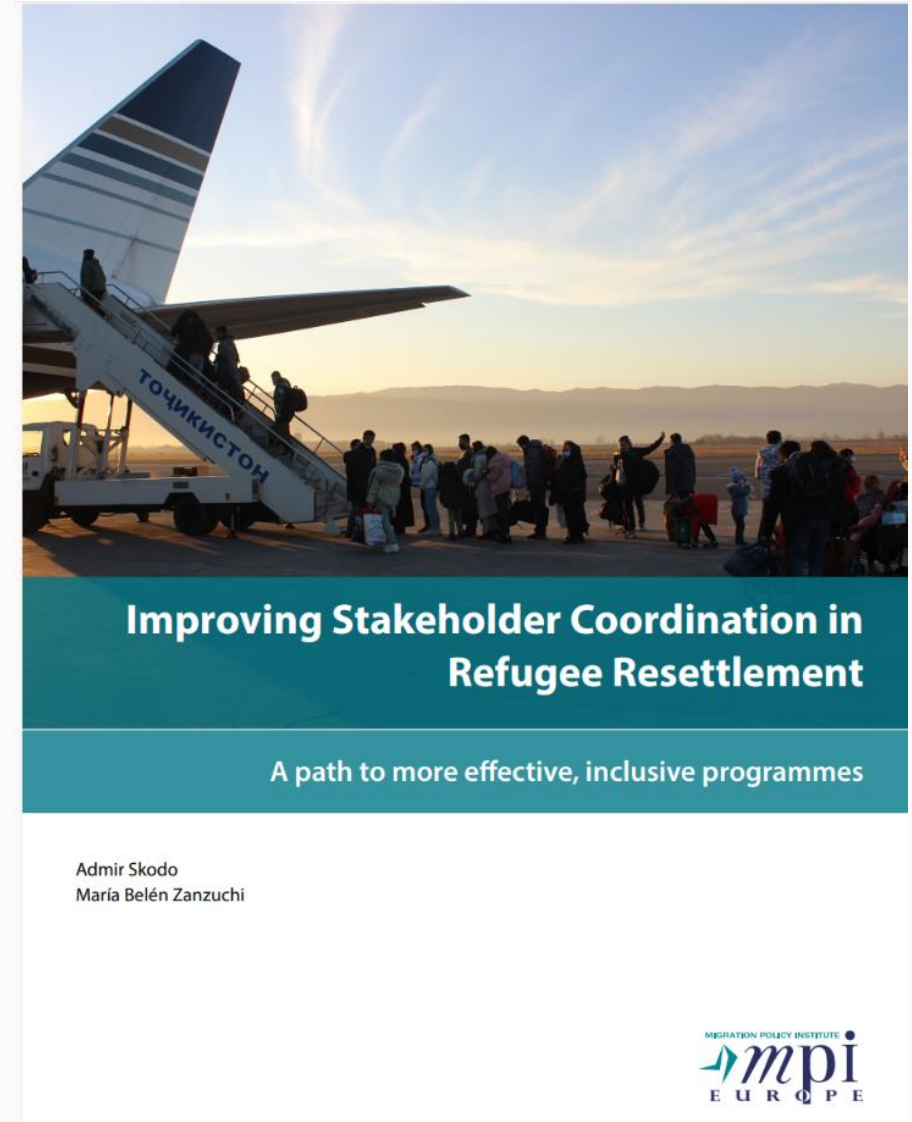
Migration Policy Institute



# Related report

*Improving Stakeholder Coordination in Refugee Resettlement: A Path to More Effective, Inclusive Programs*

[migrationpolicy.org/research/coordination-refugee-resettlement](https://migrationpolicy.org/research/coordination-refugee-resettlement)



# About the report



**What to find?** Overview of different resettlement governance structures and procedures

- Case studies: Finland, Germany, Spain, Sweden, United States.



**What for?** To identify gaps and good practices on multi-stakeholder consultation and coordination from the moment the decision on numbers and placement is made and up to predeparture preparation and post arrival integration support.



# Securing the integration of resettled refugees is crucial

- 1 Integration is crucial for refugees and to the success and sustainability of resettlement programs.
- 2 Supporting resettled refugees' integration requires political will but also capacity.
- 3 Integration starts before arrival.



# Local stakeholders are key partners in this endeavor

- 1 In nearly all resettlement programs, it is **local stakeholders** that are at the **centre of welcoming and integrating new refugees**:
  - Shape narratives around refugees.
  - Make cities and towns more or less welcoming.
  - Untap important resources (e.g., housing, jobs).
- 2 Successful integration requires that local stakeholders have the capacity to support and include refugees into the fabric of their destination communities once they arrive. Working with local stakeholders is therefore key for better integration outcomes.





Yet, there are some challenges..



# Limited consultation with local stakeholders

Despite their key role, local stakeholders and communities rarely have a voice in shaping resettlement programmes.

- 1 Lack of local-level involvement in resettlement commitments can backfire:
  - Disrupting the smooth functioning of pathways, and negatively impacting the integration refugees.
  - Representing a missed opportunity when there are mismatches between refugees' skills and local economic opportunities or resources.
  - Impacting resettlement numbers.

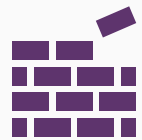




# Limited coordination channels and efforts

- 2 Major communicative and collaboration gaps still exist between the different government levels and civil society actors, impacting resettlement outcomes:
  - Leaving local communities without adequate and timely information about the profile, needs, background and arrival time of refugees;
  - Leading local communities to be ill-prepared to welcome and support refugees.





How can we further strengthen and improve the collaboration among different actors for better reception and integration of resettled refugees?



# Enhancing multi-stakeholder communication and collaboration channels

- 1 Setting more inclusive frameworks for local involvement:
  - Introducing mechanisms for gathering input from local stakeholders.
  - Giving local stakeholders a greater role in welcoming refugees.
- 2 Incentivizing coordination throughout the resettlement process:
  - Kick starting integration before departure (e.g., expectation management).
  - Linking pre-departure and post arrival support (e.g., information sharing).
  - Addressing post arrival integration challenges (e.g., inter-institutional boards or discussion tables).



## .. while also investing in capacity building

- 1 Supporting awareness raising efforts at the local level.
- 2 Advancing monitoring and evaluation and creating institutional capacity.
- 3 Ensuring sufficient funding is available at the local level.



**Thank you!**

